



孕龍科技股份有限公司
ZeroPlus Technology Co., Ltd.

SPECIFICATION

MODEL: DSA 使用说明书

PART NO : 031 _____

VERSION : V1.03 _____

Approver		Check	Design
GM	PM		

Customer Confirm

* Please fax the file to
ZeroPlus Technology after
signing .



目录

1	软件安裝.....	3
2	人机界面.....	8
3	使用说明.....	10



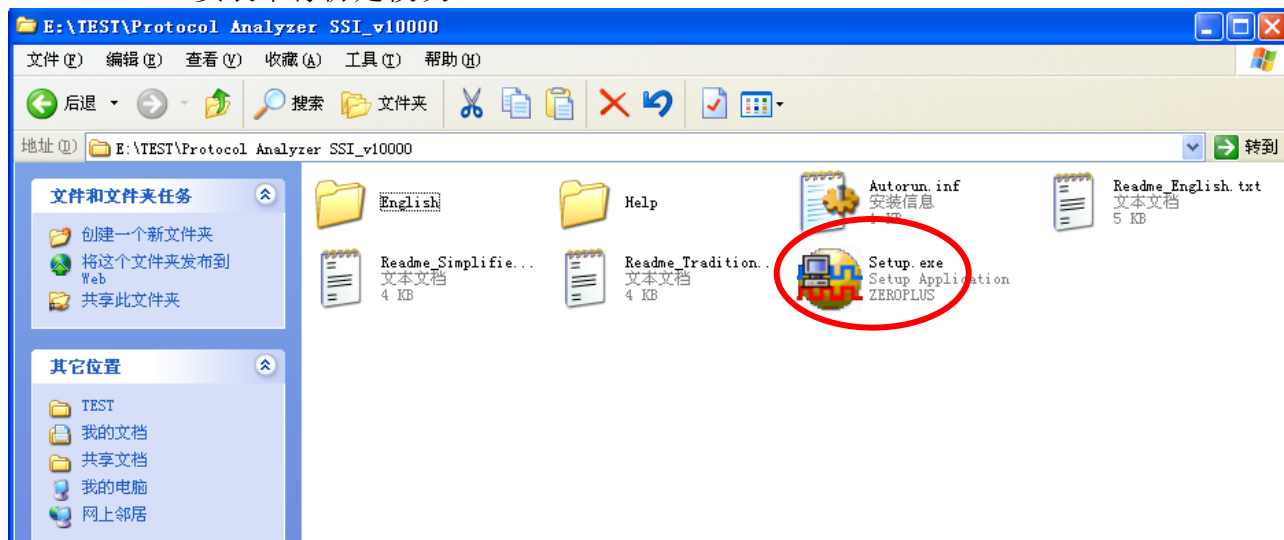
1 软件安装

安装软件请依照下列步骤安装。

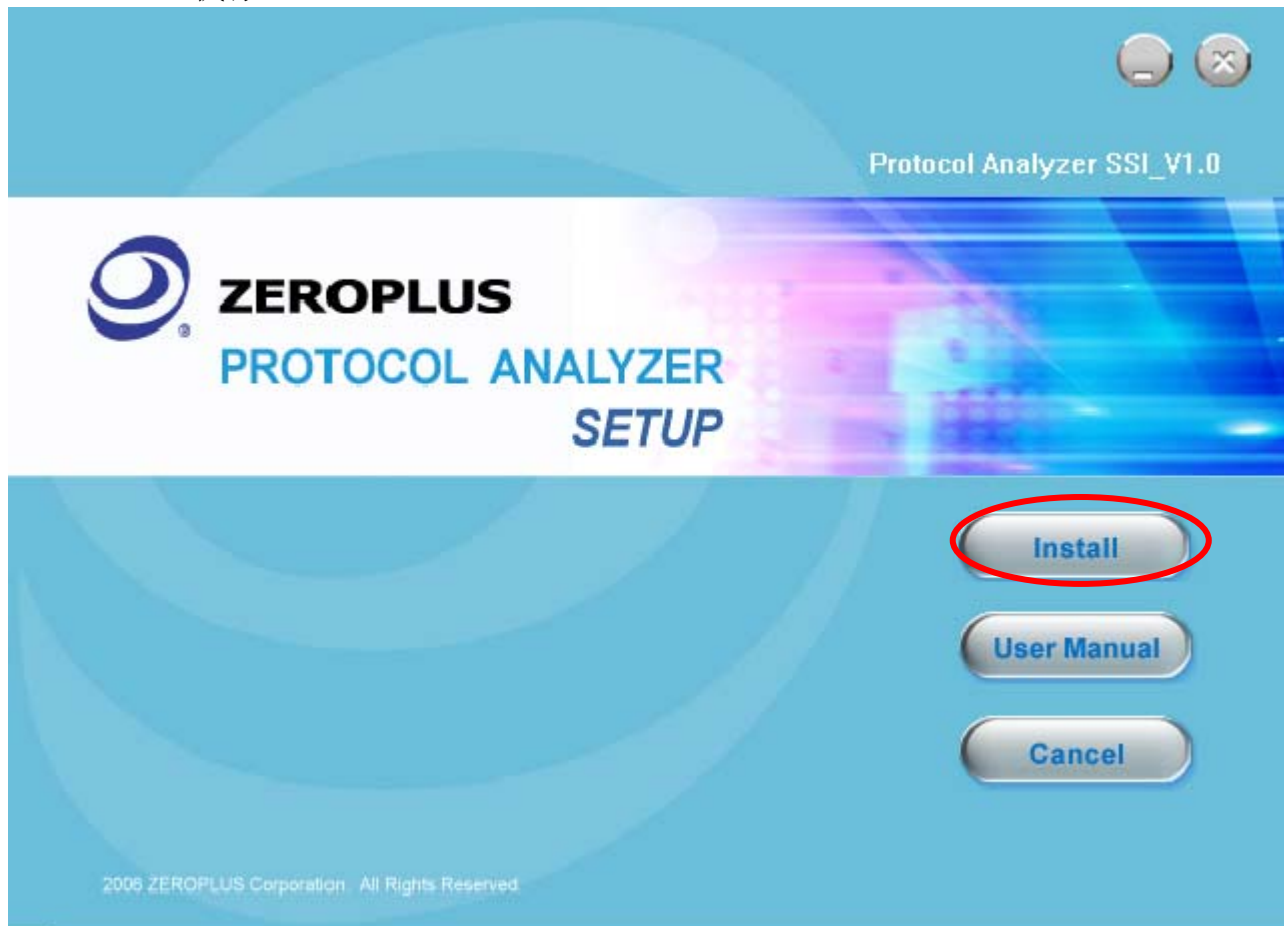
※ 注 1：所有串行协定安装程序皆相同，安装时依照程序即可，下图安装以 SSI 串行协定为例，藉以参考。

※ 注 2：本说明书若有任何改动恕不另行通知。因模块版本升级而造成的与本说明书不符，以模块软件为准。

STEP 1. 安装串行协定模块。

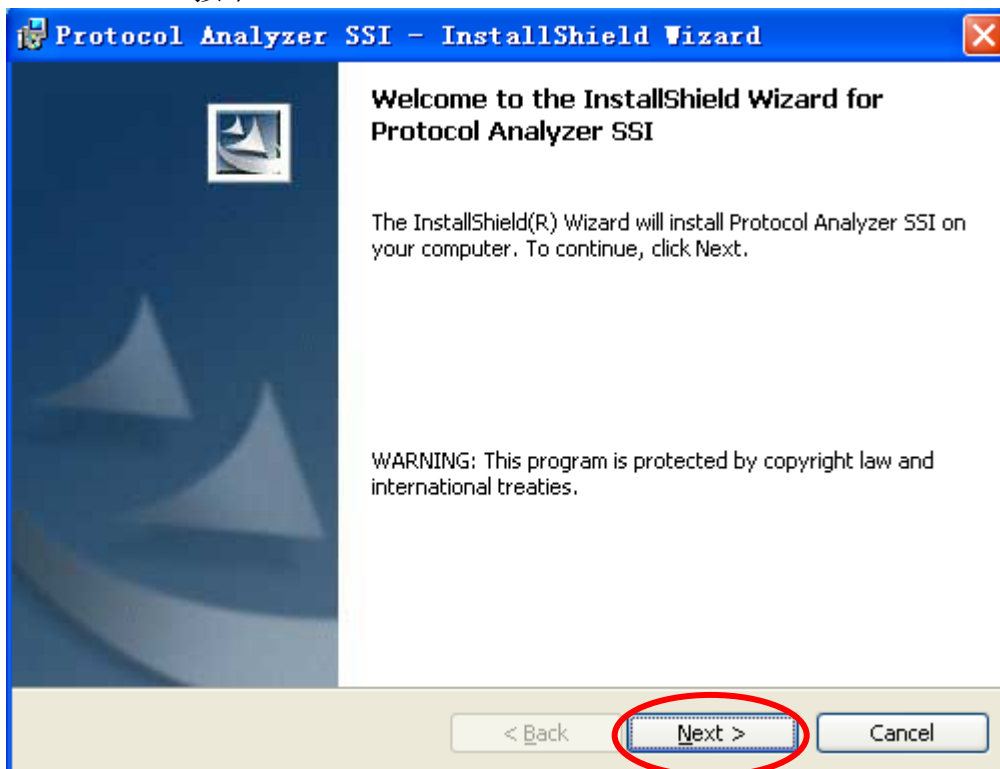


STEP 2. 执行 Install。

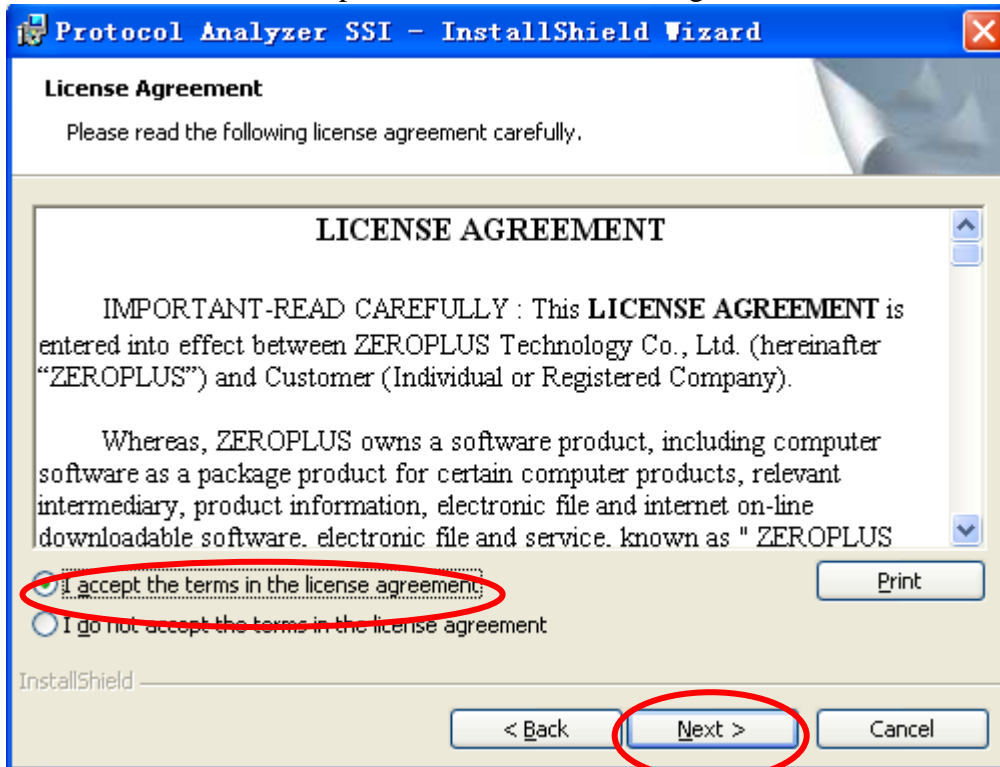




STEP 3. 按下 Next。



STEP 4. 點選 I accept the terms in the license agreement, 并按下 Next。





STEP 5. 填写完相关数据，点选 Next。

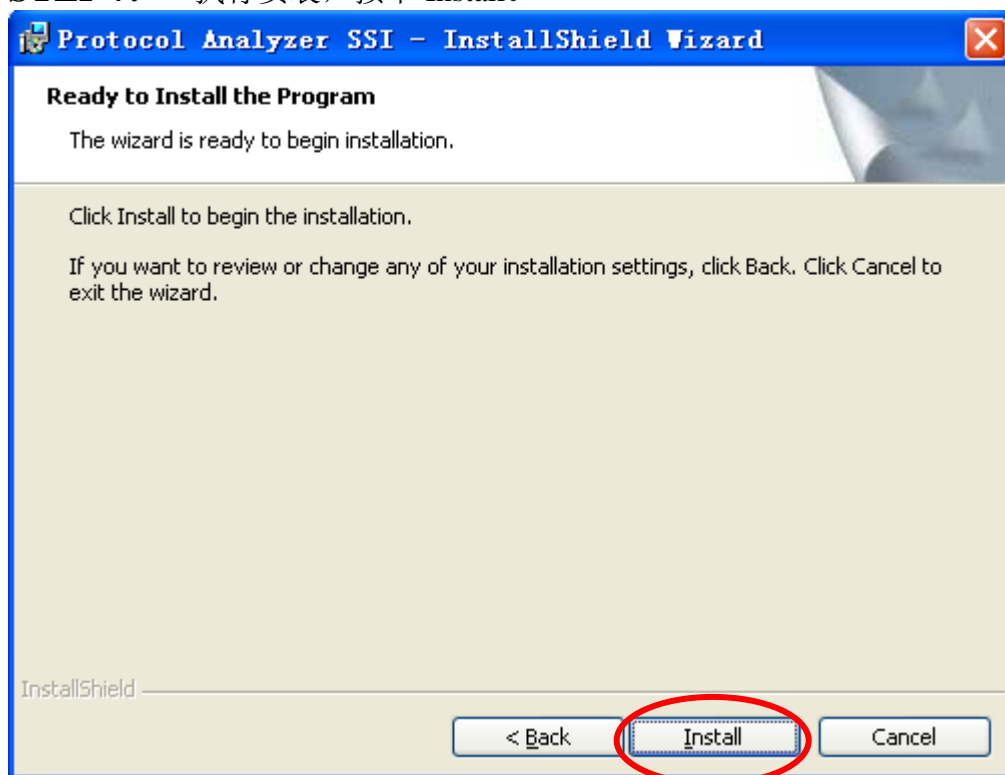
The screenshot shows the 'Customer Information' screen of the 'Protocol Analyzer SSI - InstallShield Wizard'. The title bar is blue with the text 'Protocol Analyzer SSI - InstallShield Wizard' and a close button. The main area has a light beige background. At the top, it says 'Customer Information' and 'Please enter your information.' Below this, there are two text input fields: 'User Name:' with the text '微软用户' and 'Organization:' with the text '微软中国'. Further down, it says 'Install this application for:' followed by two radio button options: 'Anyone who uses this computer (all users)' (which is selected) and 'Only for me (微软用户)'. At the bottom, there are three buttons: '< Back', 'Next >' (which is circled in red), and 'Cancel'. The bottom left corner has the 'InstallShield' logo.

STEP 6. 点选 Next。

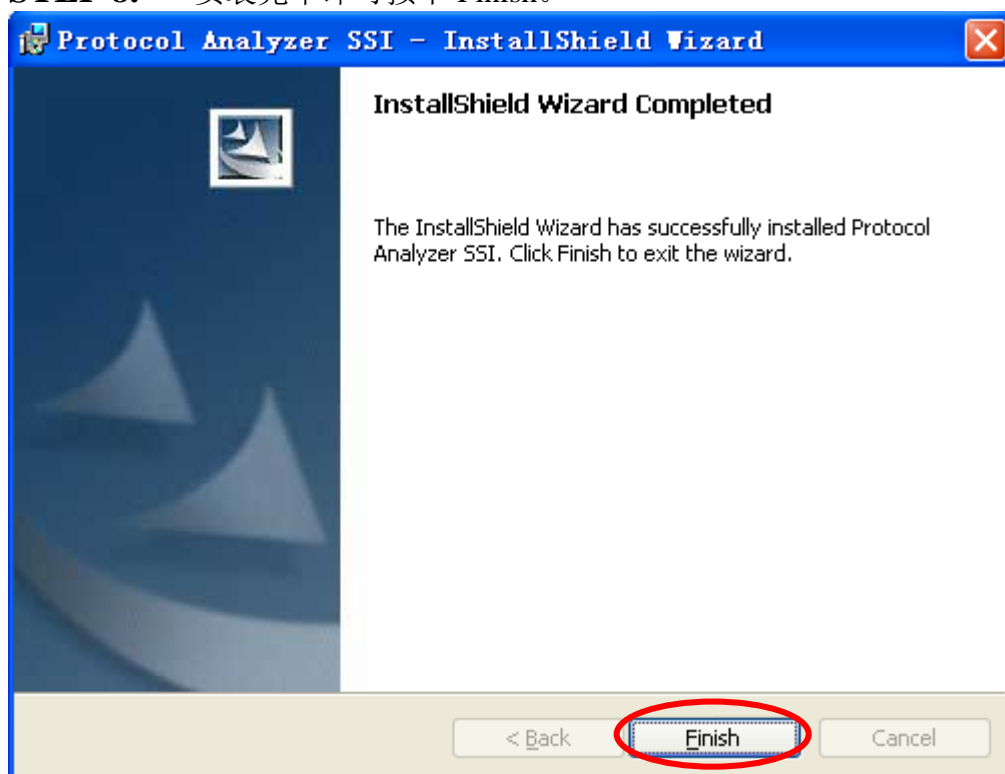
The screenshot shows the 'Setup Type' screen of the 'Protocol Analyzer SSI - InstallShield Wizard'. The title bar is blue with the text 'Protocol Analyzer SSI - InstallShield Wizard' and a close button. The main area has a light beige background. At the top, it says 'Setup Type' and 'Choose the setup type that best suits your needs.' Below this, it says 'Please select a setup type.' There are two radio button options: 'Complete' (which is selected) and 'Custom'. Each option has a small icon and a description. The 'Complete' option says 'All program features will be installed. (Requires the most disk space.)' and the 'Custom' option says 'Choose which program features you want installed and where they will be installed. Recommended for advanced users.' At the bottom, there are three buttons: '< Back', 'Next >' (which is circled in red), and 'Cancel'. The bottom left corner has the 'InstallShield' logo.



STEP 7. 执行安装，按下 Install。



STEP 8. 安装完毕即可按下 Finish。





2 人机界面

在设定页，相关设定可参考下图界面。

设定页

串行协定 DSA 分析: Bus1

设定 封包 注册

通道设定

DATA: A0 STB: A1 ACK: A2

串行协定颜色

START COMMAND DATA ACK NACK

确定 取消 默认值 帮助

通道设定:

DATA 数据讯号线，默认值为 A0。

STB 同步讯号线，默认值为 A1。

ACK 传输确认线，默认值为 A2。

串行协定颜色：使用者可自行设定。



封包页

封包部分可依使用者选择相关颜色进行调整。

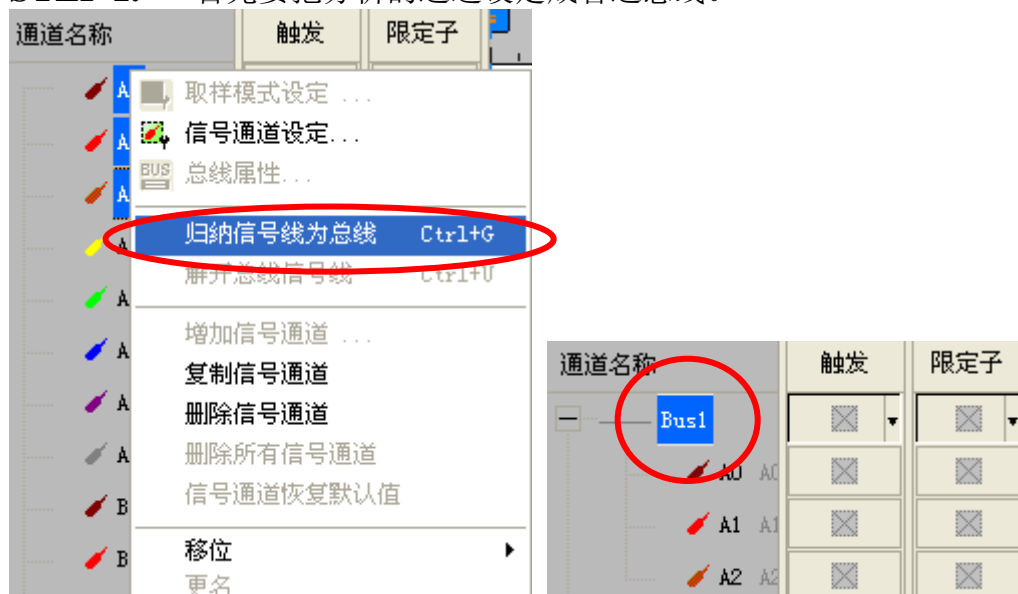
注册页

注册部分提供公司信息，使用者如有相关问题可拨打电话或上网查询。

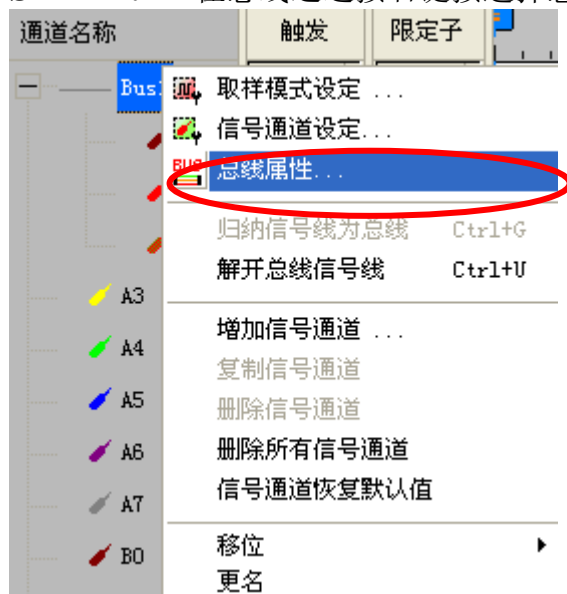


3 使用说明

STEP 1. 首先要将分析的通道设定成普通总线。

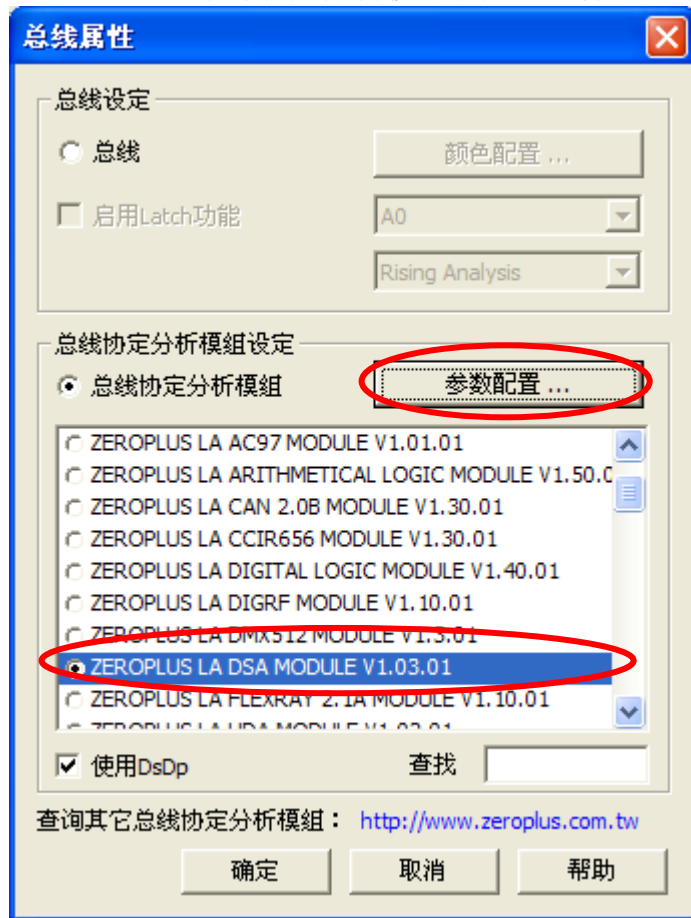


STEP 2. 在总线通道按右键按选择总线属性。

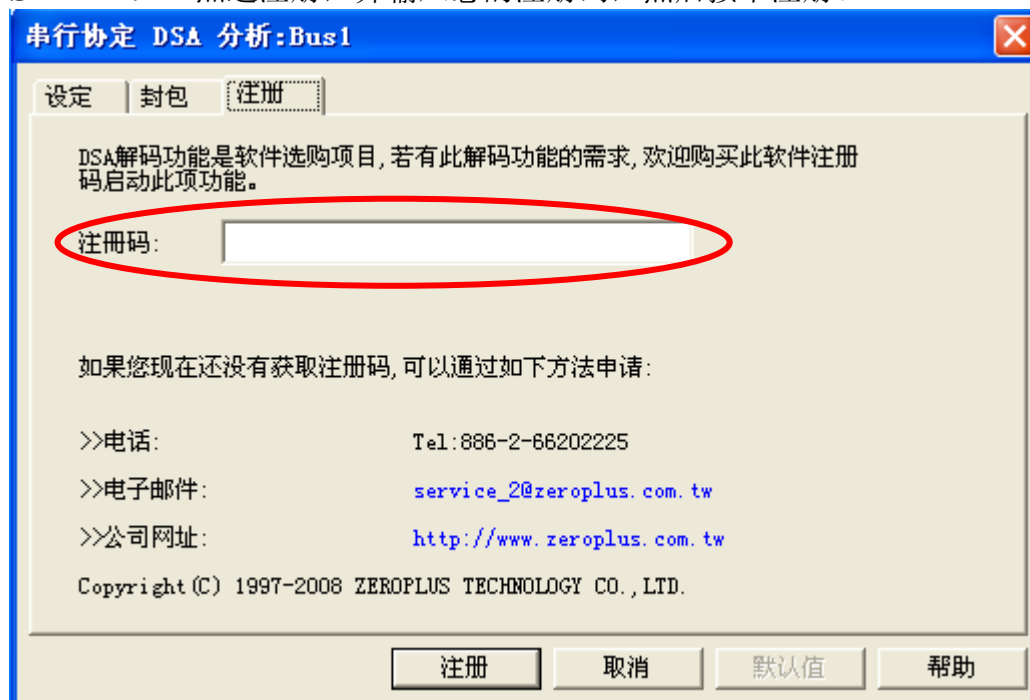




STEP 3. 串行协定分析模组设定，选择 DSA 后点选参数配置。

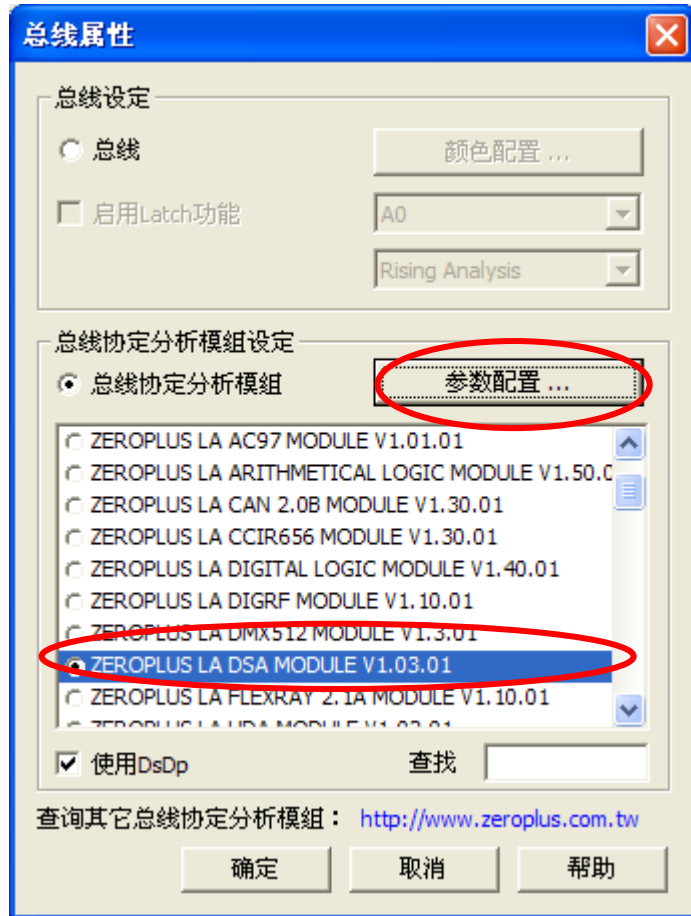


STEP 4. 点选注册，并输入您的注册码，然后按下注册。

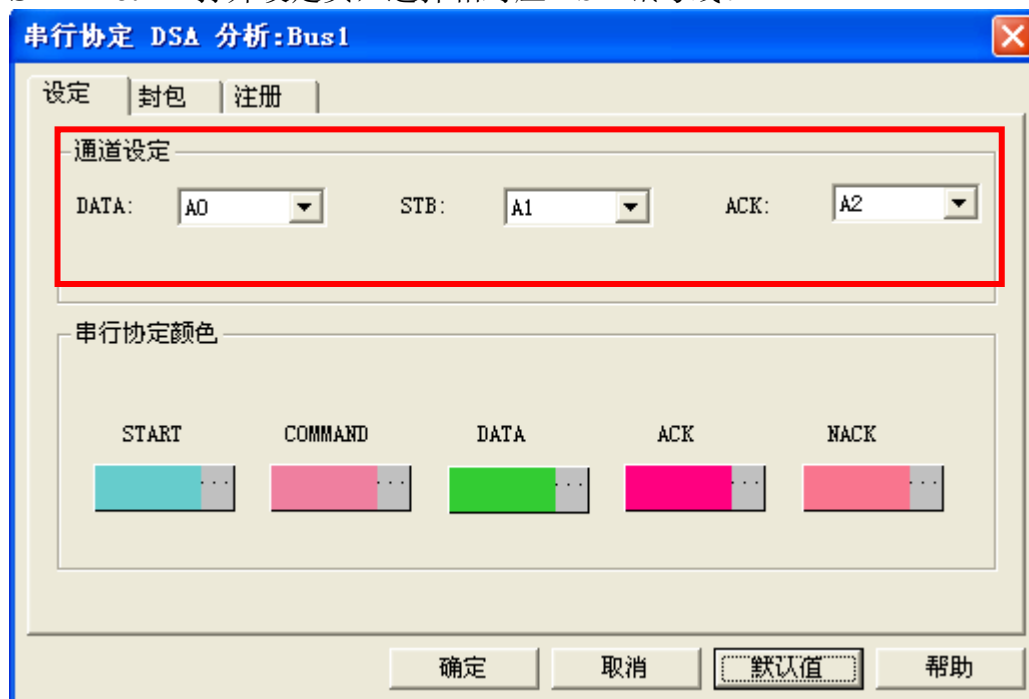




STEP 5. 注册完毕后，按下参数配置按钮，设定串行协定分析模组参数。

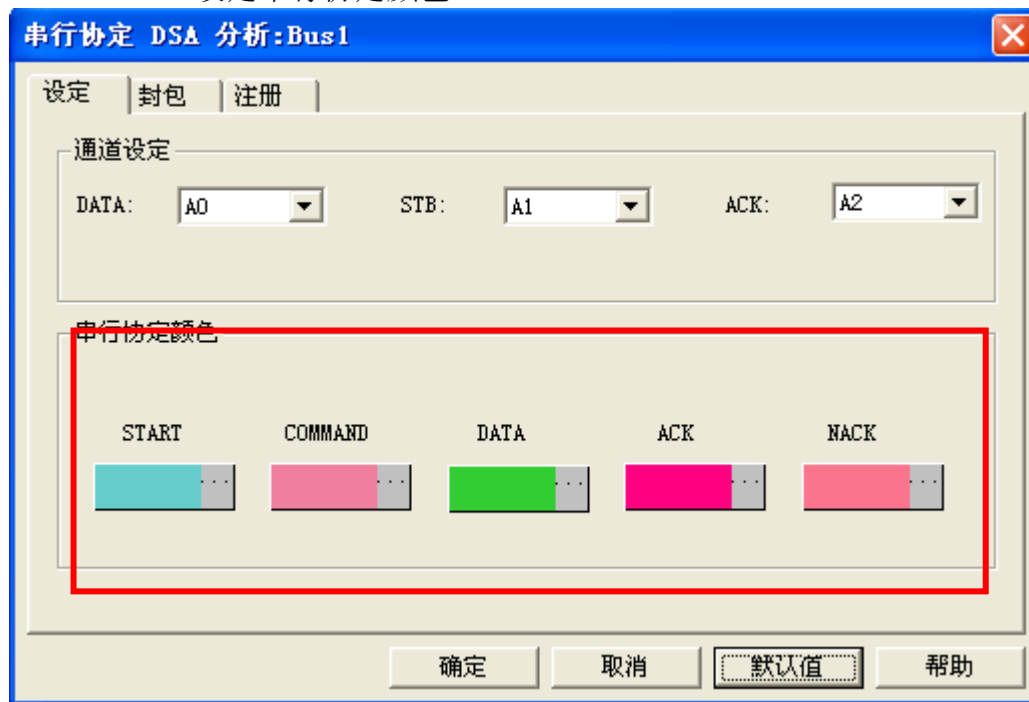


STEP 6. 打开设定页，选择相对应 DSA 讯号线。



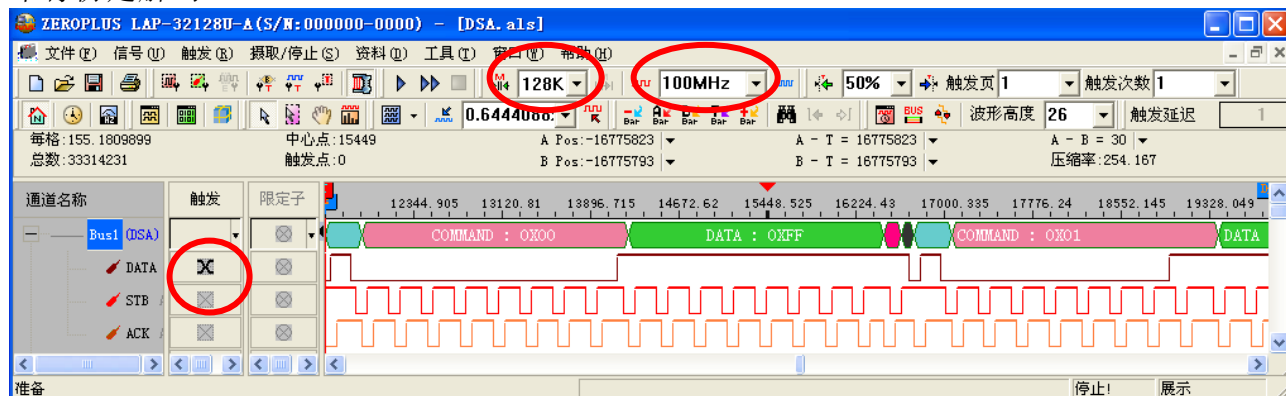


STEP 7. 设定串行协定颜色。



STEP 8. 串行协定分析模组译码完成图示，设定条件为任一变化缘，记忆深度为 128M，取样频率为 100MHZ。

串行协定解码





封包列表

